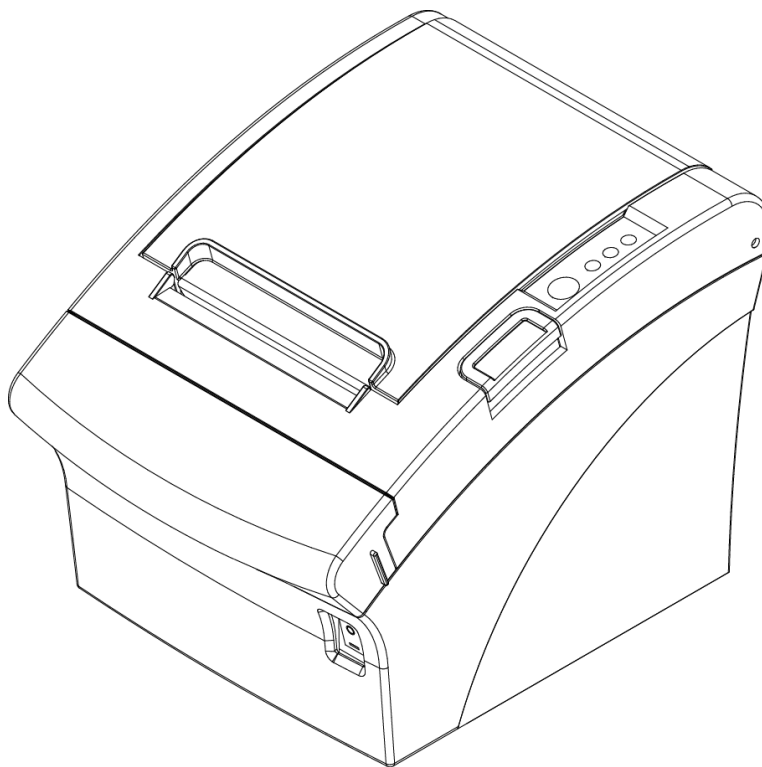


METAPACE

Setup Utility Guide **OPOS Driver**

Rev. 1.01

Metapace T-3II



<http://www.metapace.com>

■ Table of Contents

1. Instruction	3
2. Development Precondition	4
2-1 Features	4
2-2 Operating Environment.....	4
2-3 Accessible Devices	4
3. Metapace OPOS Setup	5
3-1 POSPrinter Registration	5
3-2 CashDrawer Registration.....	8

1. Instruction

This manual includes the information required to make applications with the Metapace OPOS driver for using the printer models Metapace T-3II that are provided by Metapace.

You must set the device using the PSP Launcher before using the Metapace printer.

“OLE for Retail POS” is referred to as “OPOS” in this manual.

[Reference Sites]

<http://monroecs.com/opos.htm>: OLE for Retail POS Committee

<http://www.Metapace.com>: Driver Update

We at Metapace maintain ongoing efforts to enhance and upgrade the functions and quality of all our products. In following, product specifications and/or user manual content may be changed without prior notice.

2. Development Precondition

2-1 Features

Through these standardized API functions, you can develop powerful, open POS systems easily.

2-2 Operating Environment

Hardware	IBM PC/AT or Compatible
Operating System	Windows XP / Windows Server 2003 Windows Vista / Windows Server 2008 Windows 7 / Windows 8
Hdd	Recommend 10M bytes free
Memory	Recommend 32M bytes over
Serial Ports	COM1, COM2, COM3 ... COM50
Parallel Ports	LPT1, LPT2, LPT3, LPT4
USB ports	Windows XP / Windows Server 2003 Windows Vista / Windows Server 2008 Windows 7 / Windows 8
Supported Languages	Microsoft Visual Basic Version 6.0 Microsoft Visual C++ Version 6.0 Power Builder / Delphi / etc..

2-3 Accessible Devices

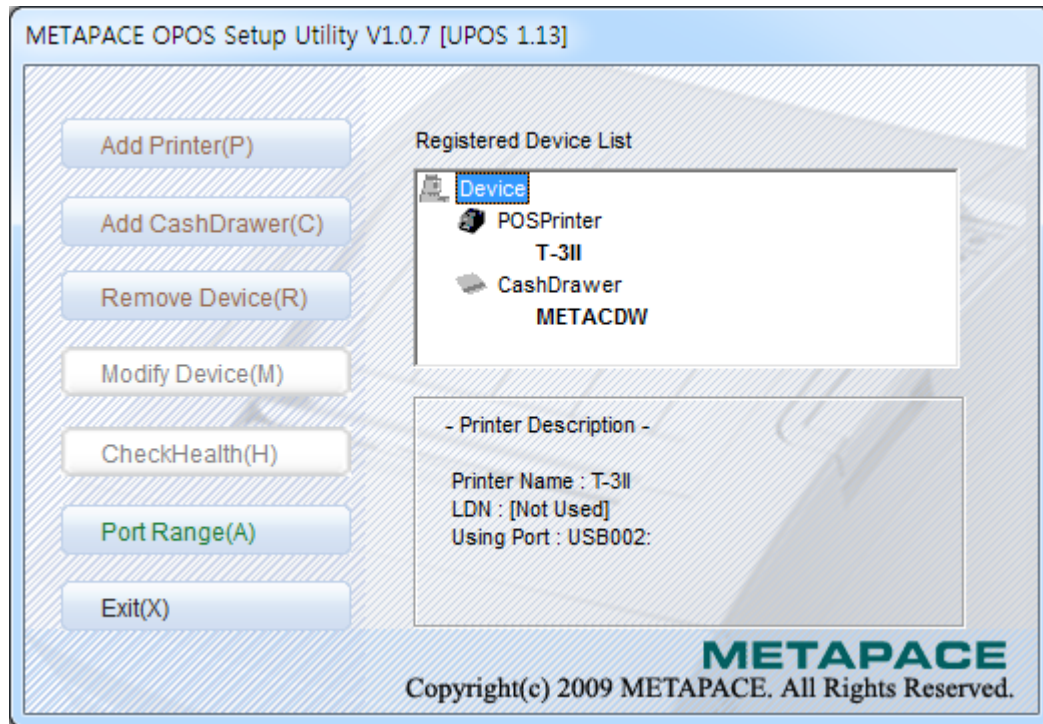
POSPrinter

Model	Serial	Parallel	USB	Ethernet	Bluetooth	WirelessLAN
T-3II	O	O	O	O	X	O

3. Metapace OPOS Setup

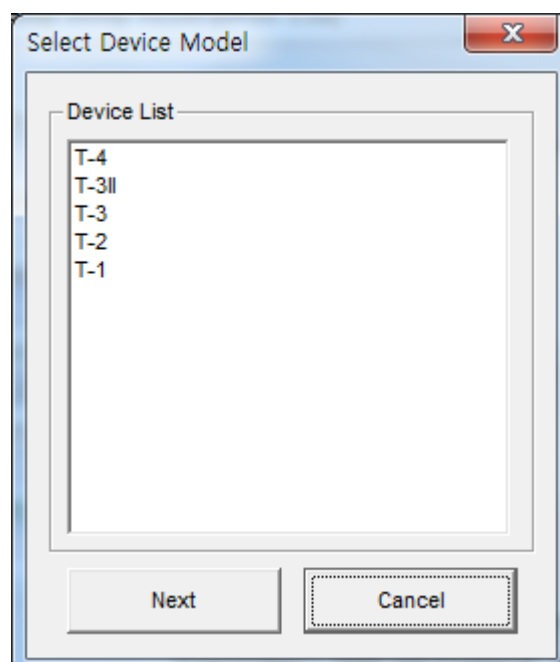
After Metapace OPOS Driver installations execute “OPOS Setup Utility” to register or configure POSPrinter, “OPOS Setup Utility” that is located in“.

Start>Program>Metapace>OPOS Driver>OPOS Setup Utility”.

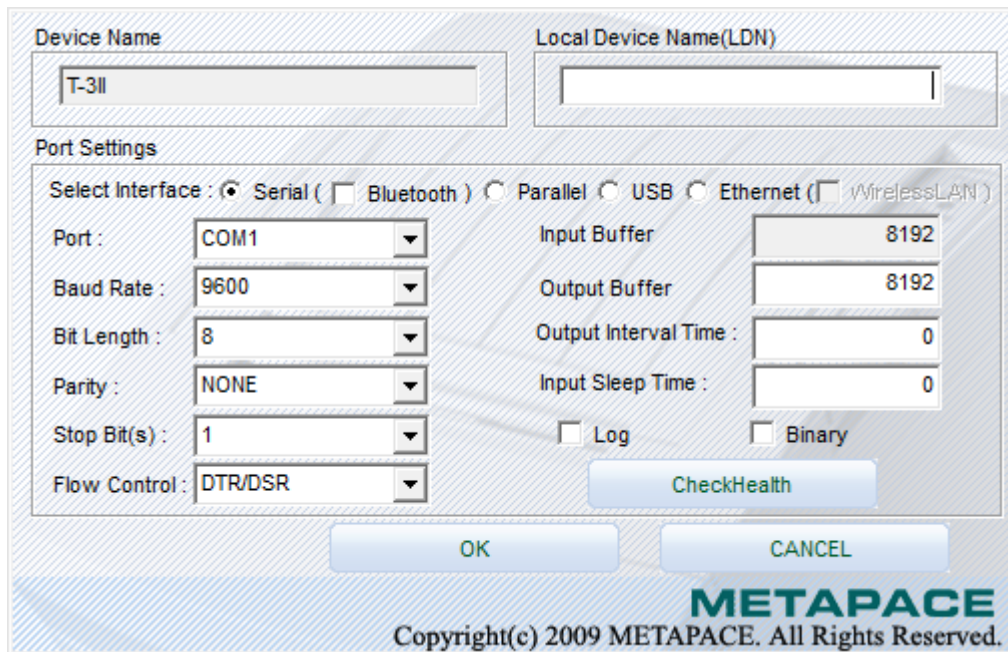


3-1 POSPrinter Registration

1) Click “Add Printer” button.



2) Select printer model and Click “Next” button.

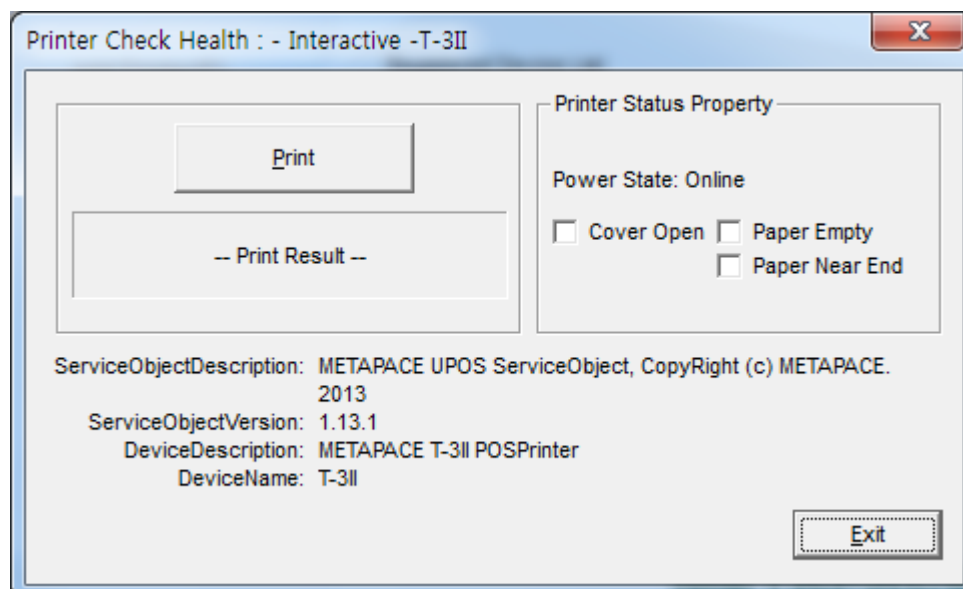


The image shows the 'Port Settings' dialog box from the METAPACE software. It has a title bar with 'Device Name' and 'Local Device Name(LDN)'. The 'Device Name' field contains 'T-3II'. The 'Port Settings' section includes a 'Select Interface' row with radio buttons for Serial (selected), Bluetooth, Parallel, USB, and Ethernet (with a sub-option for WirelessLAN). Below this are several dropdown menus: Port (COM1), Baud Rate (9600), Bit Length (8), Parity (NONE), Stop Bit(s) (1), and Flow Control (DTR/DSR). To the right of these are input fields for Input Buffer (8192), Output Buffer (8192), Output Interval Time (0), and Input Sleep Time (0). There are also checkboxes for 'Log' and 'Binary'. A 'CheckHealth' button is located below the 'Log' and 'Binary' checkboxes. At the bottom are 'OK' and 'CANCEL' buttons. The METAPACE logo and copyright notice 'Copyright(c) 2009 METAPACE. All Rights Reserved.' are at the bottom right.

3) Set the communication environment of the connected printer and click “SAVE” or “OK” button.

4) Click “Checkhealth” to see if the printer operates properly.

<POSPrinter CheckHealth Dialog>

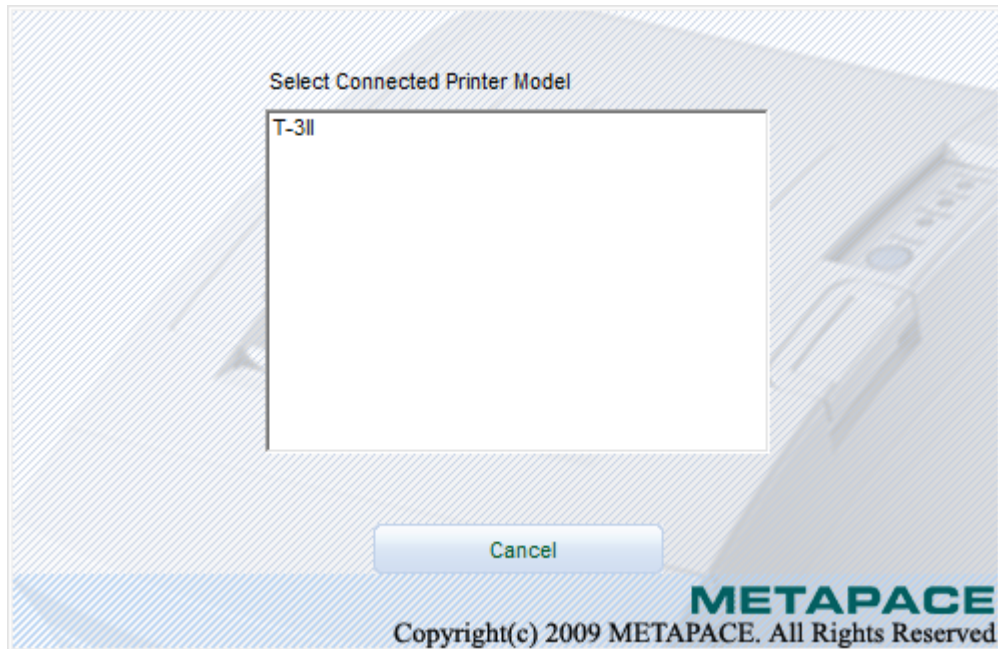


The image shows the 'Printer Check Health' dialog box. The title bar reads 'Printer Check Health : - Interactive -T-3II'. The dialog is divided into two main sections. The left section contains a 'Print' button and a 'Print Result' area. The right section, titled 'Printer Status Property', shows 'Power State: Online' and three checkboxes: 'Cover Open', 'Paper Empty', and 'Paper Near End'. At the bottom, there is a text area displaying service object information: 'ServiceObjectDescription: METAPACE UPOS ServiceObject, CopyRight (c) METAPACE. 2013', 'ServiceObjectVersion: 1.13.1', 'DeviceDescription: METAPACE T-3II POSPrinter', and 'DeviceName: T-3II'. An 'Exit' button is located at the bottom right.

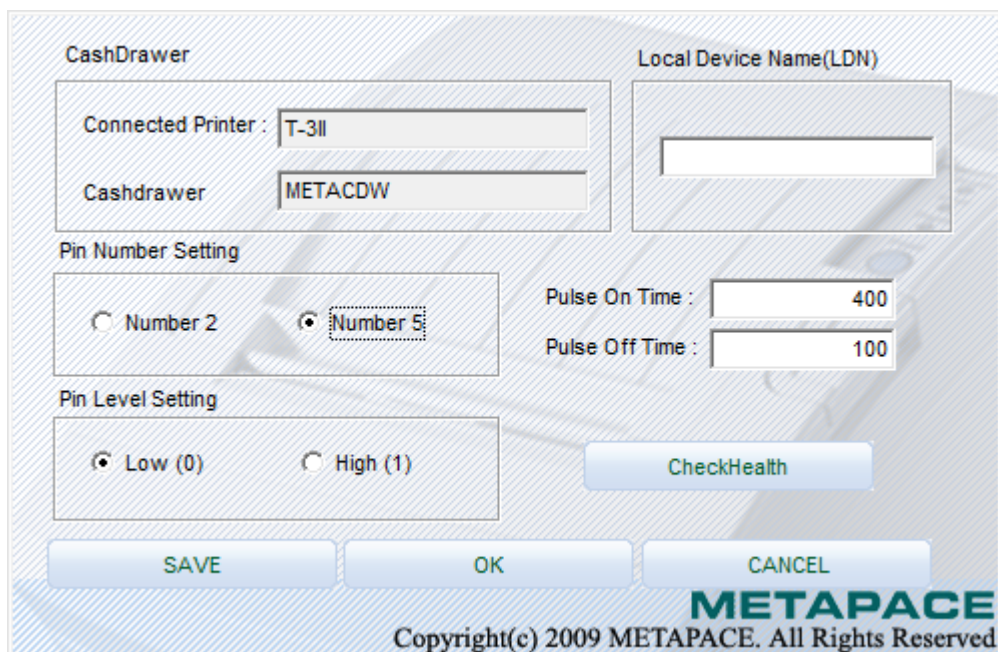
Item	Description
Logical Device Name (LDN) [Edit Box]	New Logical Device Names can be modified by typing the name in the box and then pressing the OK button.
Port [Drop List Combo Box]	Port setting.
Bits per second [Drop List Combo Box]	Baud rate setting for the COM port. This setting will be restricted according to the limitations of the device. If using parallel port, this control can not set and reference.
But Length [Drop List Combo Box]	Bit length setting for the COM port. This setting will be restricted according to the limitations of the device. If using parallel port, this control can not set and reference.
Parity Bits [Drop List Combo Box]	Parity setting for the COM port. This setting will be restricted according to the limitations of the device. If using parallel port, this control can not set and reference.
Stop Bits [Drop List Combo Box]	Stop bit setting for the COM port. This setting will be restricted according to the limitations of the device. If using parallel port, this control can not set and reference.
Handshake [Drop List Combo Box]	Handshake setting for the COM port. This setting will be restricted according to the limitations of the device. If using parallel port, this control can not set and reference.
Input Buffer (byte) [Edit Box]	Input buffer size for the COM port. Valid size must be from 32 to 8192. If using parallel port, this control can not set and reference.
Output Buffer (byte) [Edit Box]	Output buffer size for the COM and LPT port. Valid size must be from 32 to 4096.
Output Interval Time (msec) [Edit Box]	Sets the interval between retries (amount of time passed to the Win 32 API Sleep function) if there has been an error during output. Valid time value must be from 0 to 9999. For a slave device, this is disabled.
Input Sleep Time (msec) [Edit Box]	Sets an interval to be set (amount of time passed to the Win32 API Sleep function : not assistance) to cause the Device to sleep during input Valid time value must be from 0 to 99. For a slave device, this is disabled.
CheckHealth	Invoke the CheckHealth method for this device with Level = OPOS_CH_INTERACTIVE. This method inform status of printer.
Apply or OK [Button]	Save current settings and exit.
Cancel[Button]	Discard current settings and exit.

3-2 CashDrawer Registration

- 1) Click “Add CashDrawer” button.
- 2) Select the printer connected to Cashdrawer among the registered printers.

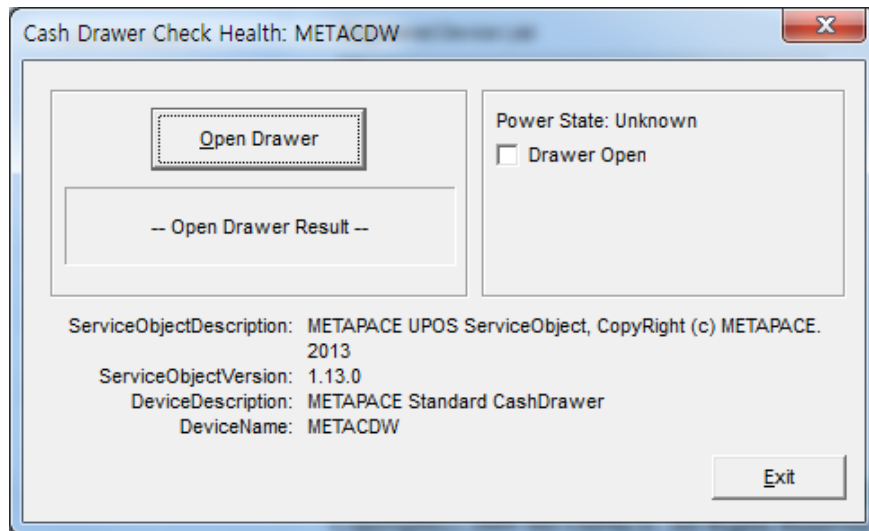


- 3) Set up CashDrawer and click “SAVE” or “OK” button.



4) Click “Checkhealth” to see if the printer operates properly.

<CashDrawer CheckHealth Dialog>



Item	Description
Pin Number	Pin Number of drawer kick connector outputting signals. (Default Value : Pin 2)
Open Level	This shows the symbol(Low/High) status when the drawer is closed. The status (Low.High) can be chosen from Open Level Frame. (Default Value : Low)
Pulse ON time	Pulse ON Time outputting the specified pin in Connector Pin No.(Default Value : 100[msec])
Pulse OFF time	Pulse OFF Time outputting the specified pin in Connector Pin No. The unit is millisecond. (Default Value : 400[msec])
CheckHealth	Invoke the CheckHealth method for this device with Level = OPOS_CH_INTERACTIVE. This method informs status of cashdrawer.

* if the system has more ports than the default port range of Metapace OPOS Driver Setup Utility, click “Port Range” button and set the port range.

* If you select the port that the system doesn't have, the device won't operate.

